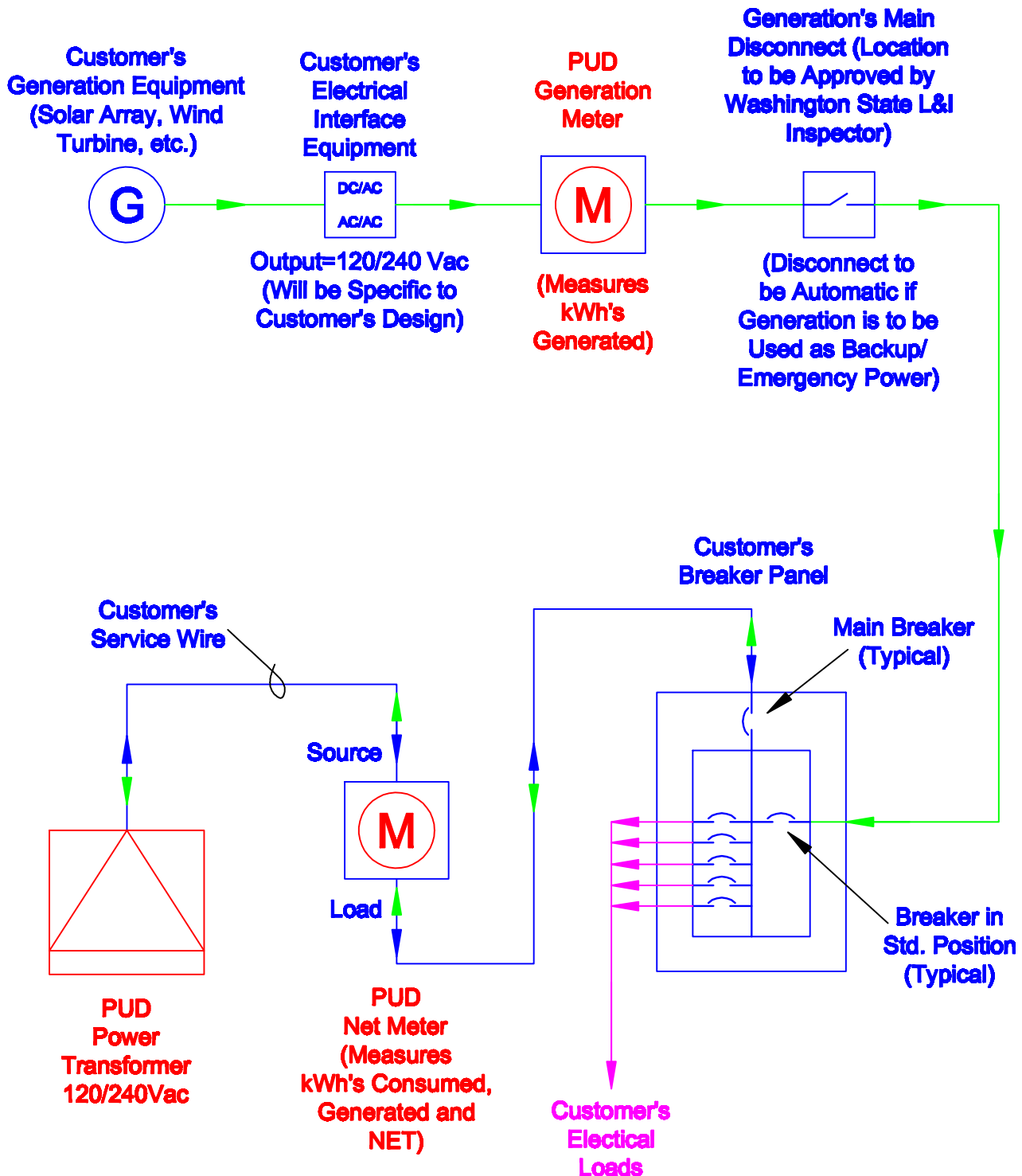


P.U.D. #2 of Pacific County: Net Metering Diagram*



*This diagram is a guideline for interconnection to the Grid. Each installation will vary depending on the customer's existing electrical service and the customer's proposed generation. The customer must enter into a Net Metering Contract with the District prior to interconnection. All customer-installed equipment to be approved by Washington State L&I Inspector.